

OVERVIEW OF INCOMING SIGNALS

The following information is based on incoming communication with the National Human Trafficking Hotline from January 1, 2016 – December 31, 2016 about human trafficking cases and issues related to human trafficking in the Northern Mariana Islands. Communication can take the form of **phone calls, online tip reports, or emails**. Communication regarding topics unrelated to human trafficking are not included in this report. In 2016, the National Human Trafficking Hotline received a total of **34,068** phone calls, emails, or online tip reports nationwide.



3 Phone Calls



0 Emails



0 Online Tip Reports

SUBSTANTIVE CALL DATA

The following statistics are based solely on substantive calls about human trafficking and issues related to human trafficking made to the National Human Trafficking Hotline between January 1, 2016 and December 31, 2016 from callers in the Northern Mariana Islands at the time of their call. Substantive calls exclude hang-ups, missed calls, wrong numbers, and calls in which the caller's reason for calling is unknown.

Number of Substantive Calls Received from the Northern Mariana Islands: **3**

CALLER TYPE	# OF CALLS	% OF CALLS
Victim of Labor Exploitation	3	100.0%
TOTAL # OF SUBSTANTIVE CALLS	3	100.0%

HOW CALLER FOUND THE NATIONAL HOTLINE	# OF CALLS	% OF CALLS
DOS Know Your Rights Pamphlet	1	33.3%
Unknown	2	66.7%
TOTAL # OF CALLS	3	100.0%

HUMAN TRAFFICKING CASE DATA

Each request submitted to the hotline is evaluated for evidence of potential human trafficking. **In the Northern Mariana Islands, a total of 1 unique cases (incidents) of potential human trafficking were reported to the hotline.**

PRIMARY REASON FOR CONTACTING THE NATIONAL HOTLINE	# OF CASES	% OF CASES
Report a Trafficking Tip	1	100.0%
TOTAL # OF CASES	1	100.0%

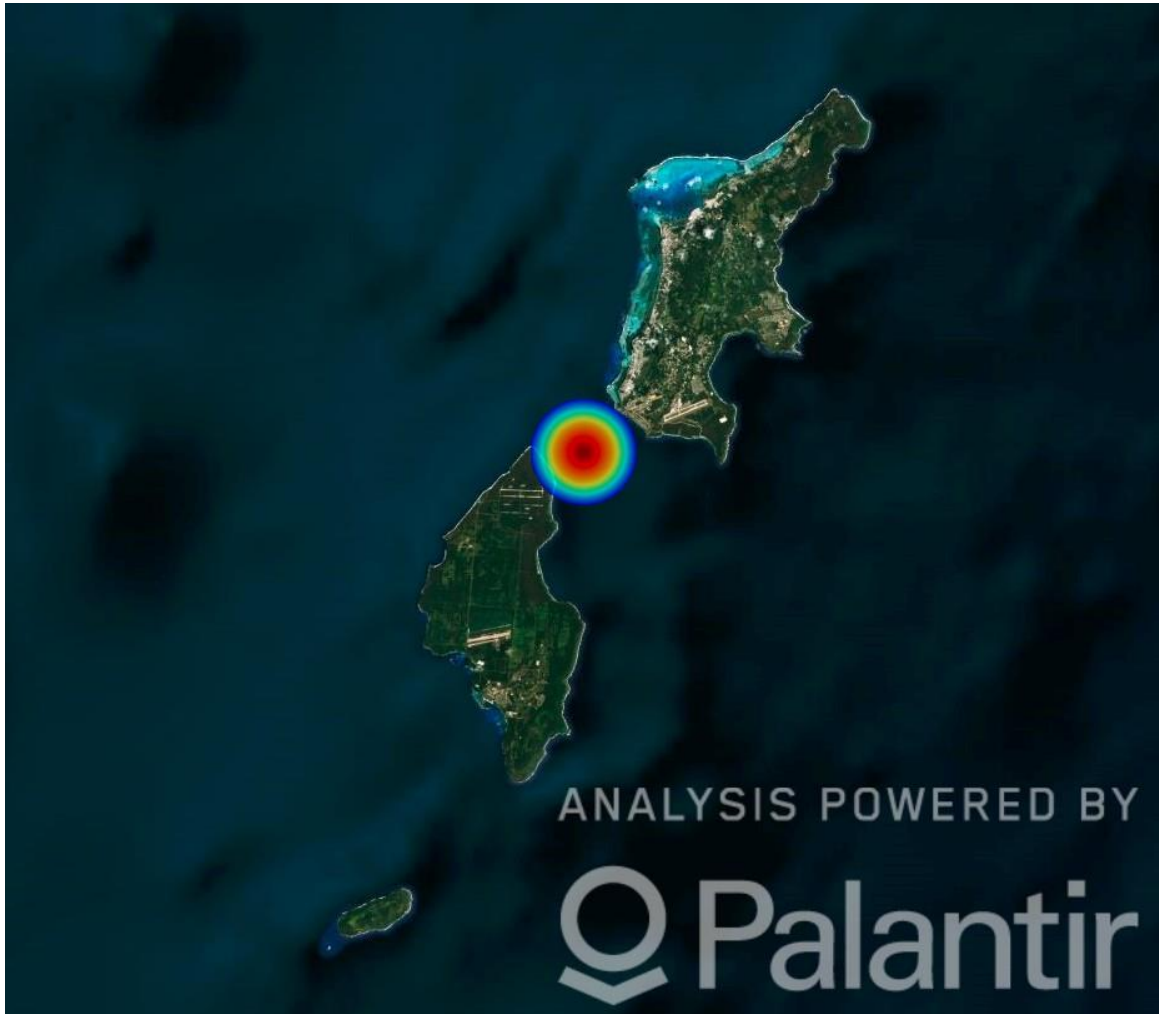
VENUE/INDUSTRY OF POTENTIAL TRAFFICKING	# OF CASES	% OF CASES
Sex	1	100.0%
Venues Referenced in Fewer than Three Cases ¹	1	100.0%
TOTAL # OF POTENTIAL TRAFFICKING CASES	48	100.0%

NATIONAL HUMAN TRAFFICKING HOTLINE DATA REPORT

Northern Mariana Islands Report: 1/1/2016 – 12/31/2016

¹To protect the identity of the people we serve, the National Human Trafficking Hotline does not disclose exact statistics related to venues, industries, victim information or caller information referenced fewer than three times.

LOCATION OF POTENTIAL TRAFFICKING CASES (WHERE KNOWN)¹⁰



¹⁰The image above is a heat map which reflects the cases reported to the National Human Trafficking Hotline. Areas in which greater numbers of cases were reported contain more red shading. This map only reflects cases in which the location of the potential trafficking was known. Some cases may involve more than one location.

Important Note: The data displayed in this report was generated based on information communicated to the National Human Trafficking Hotline via phone, email, and online tip report. The National Human Trafficking Hotline cannot verify the accuracy of the information reported. This is not a comprehensive report on the scale or scope of human trafficking within the state. These statistics are accurate as of June 1, 2017. They may be subject to change as new information emerges.